

# WCH Ophthalmology Triage and Referral Guidelines

## For referrers

The ophthalmology service at the Women's and Children's Hospital provides eye care for patients under the age of 18. This factsheet provides information to referrers to aid them in understanding the departments triaging categories.

### Referral Guidelines:

1. **Urgent referrals should be made by phone call** to the ophthalmology registrar/RMO or to the emergency department.
2. Please include copies of all reports and results. In literate children with suspected vision issues or vision loss, an optometrist report stating their vision level is required.
3. Patients are seen based on urgency, according to criteria developed by the WCH medical staff.
4. Please do not write referrals to specific consultants. All referrals to ophthalmology at WCH are pooled.
5. All contact lens clinic patients must have a WCH ophthalmology consultant overseeing their care, and will be triaged based on the underlying eye condition and vision levels.

### Excluded Conditions:

The WCH department of Ophthalmology is unable to provide a service for the following conditions. Any referrals received **will not be accepted** and sent back to the referrer.

- Chalazion with duration less than 3 months, for children under 4 years of age
- Chalazion with duration less than 6 months, for children aged 4 and over
- Uncomplicated congenital nasolacrimal duct obstruction (CNLDO) under 24 months of age
- Diabetic Retinopathy screening in literate children
- Second opinions
- Atropine treatment for progressive myopia
- Keratoconus – treatment is not provided for this condition at WCH.
- Dyslexia without reduced vision (coloured overlay/colourimetry assessment)
- Contact lens clinic referrals that do not meet the [Glasses SA criteria](#)

Please refer patients with the above conditions to a private ophthalmologist or optometrist.

For further detailed information, please refer to the [Paediatric Ophthalmology Referral Guidelines](#) published on the WCH website

### Consultants

Dr Joanna Black – Medical Unit Head  
 Dr John Pater  
 Dr Katie Billing  
 Dr Swati Sinkar

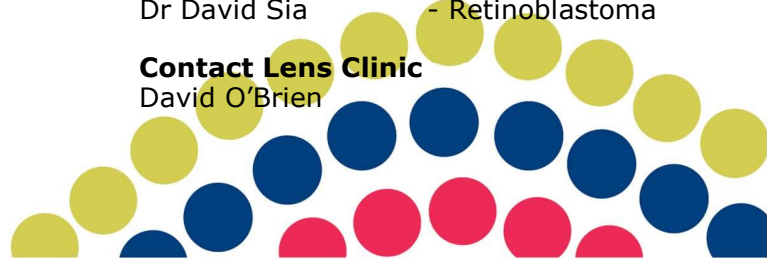


### Sub-Speciality Consultants

Dr James Slattery - Oculoplastics  
 Dr Tim Greenwell - Uveitis  
 Dr David Sia - Retinoblastoma

### Contact Lens Clinic

David O'Brien



### For more information

Ophthalmology Department  
 Women's and Children's Hospital  
 72 King William Rd, North Adelaide SA 5006  
 Telephone (08) 8161 7000



This document has been reviewed and endorsed by WCHN consumers June 2020



Interpreter



www.ausgoal.gov.au/  
 creative-commons



Government  
 of South Australia  
 Women's and Children's  
 Health Network



Women's  
 & Children's  
 Hospital

# WCH Ophthalmology Triage and Referral Guidelines

## For referrers

WCH Ophthalmology Triage Categories			
Urgent *Phone Registrar*	Priority 1	Priority 2	Priority 3
<p>Absent red reflex or white pupil – congenital or recent onset</p> <p>Acute onset</p> <ul style="list-style-type: none"> <li>o Eye movement abnormality</li> <li>o Vision loss</li> <li>o Ptosis</li> <li>o Proptosis</li> <li>o Pupil anomaly</li> </ul> <p>Papilloedema (optic disc swelling with suspicious history)</p> <p>Trauma</p> <p>Red eye</p> <ul style="list-style-type: none"> <li>o With vision loss <b>or</b></li> <li>o Acute corneal changes</li> <li>o Neonatal Conjunctivitis</li> </ul>	<p>Severe vision loss</p> <p>Optic disc swelling</p> <p>Ocular surface exposure e.g. clefting syndrome, Bell’s palsy</p> <p>Congenital ptosis, orbital mass or corneal opacity</p> <p>Suspected infantile or congenital glaucoma</p>	<p>Juvenile Idiopathic Arthritis (JIA)</p> <p>Strabismus in age &lt;7years</p> <p>Vision loss</p> <ul style="list-style-type: none"> <li>o Suspected, but unable to be tested by optometrist or GP – preliterate children only</li> <li>o Proven vision loss in a literate child – <b>referral must be accompanied by an optometrist report</b></li> </ul> <p>Screening for eye abnormalities</p> <ul style="list-style-type: none"> <li>o Plaqueul</li> <li>o A disease, syndrome or condition with ocular complications</li> <li>o Drug related side effects</li> </ul> <p>Pupil anomalies</p> <ul style="list-style-type: none"> <li>o Isolated congenital anisocoria</li> <li>o Disturbed red reflex</li> </ul> <p>Suspected glaucoma</p> <p>Chalazion, lid lump or ptosis - onset age &lt;4yrs that has persisted for more than 3 months</p>	<p>Strabismus age 7yrs or more</p> <p>Chalazion, lid lump or ptosis, onset age 4yrs and older that has persisted for more than 6 months</p> <p>Screening for eye issues</p> <ul style="list-style-type: none"> <li>o Family history of strabismus or severe refractive error</li> <li>o Children with developmental delay, without specific eye signs</li> </ul> <p>Congenital Nasolacrimal Duct Obstruction (CNLDO)</p> <p>Transfer of care – from within metropolitan Adelaide</p>

**When urgent referral is indicated, please contact the on call ophthalmology registrar through the Women’s and Children’s Hospital switchboard: (08) 8161 7000.**

### Appointment Enquiries or To Make a Referral

(08) 8161 7592 – Appointment Booking Line  
 (08) 8161 6246 – Referral Fax Number

